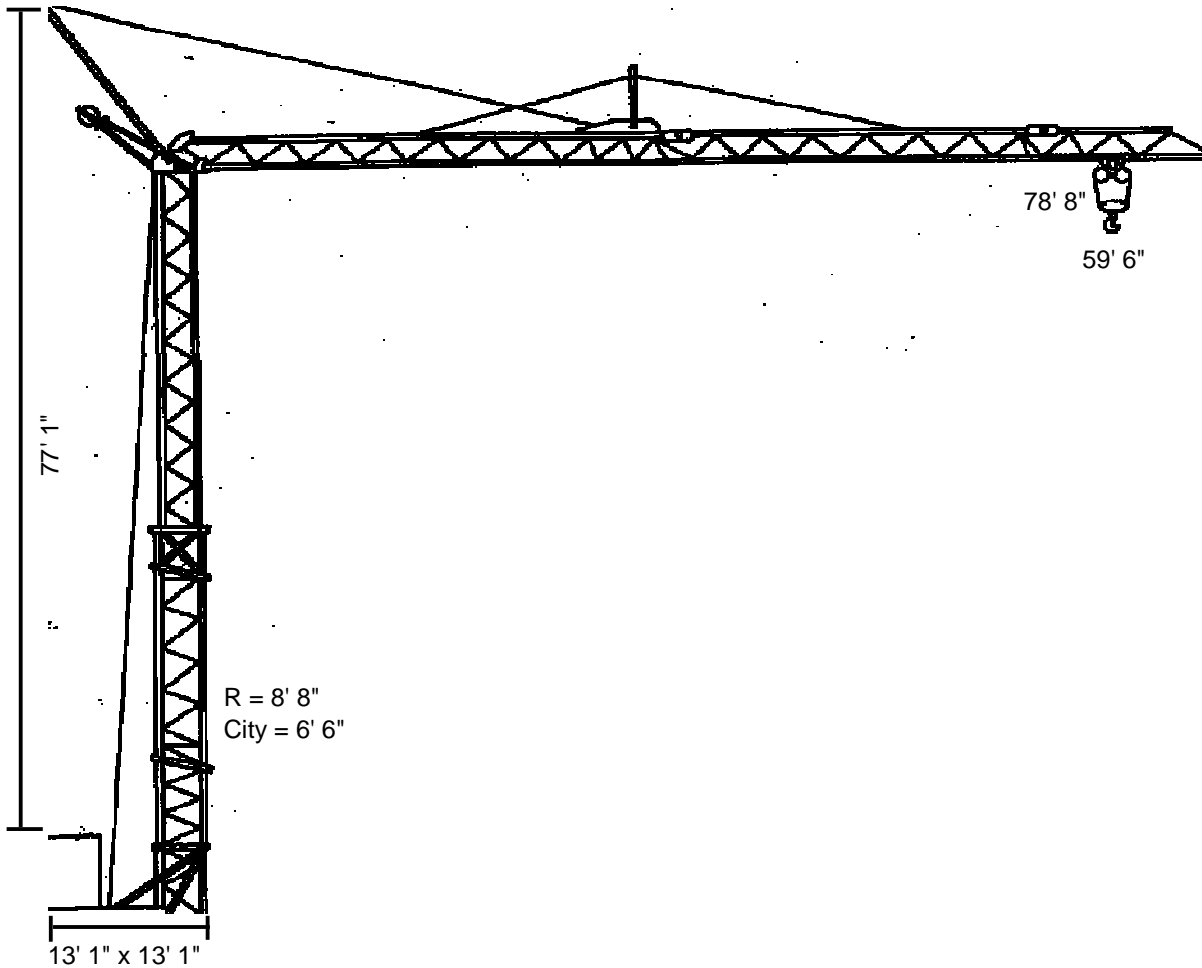


K 24 S

Self-erecting Crane



KOENIG CRANES
North America

Bringing Innovation To Construction

Phone: 887-852-2192 Fax: 604-852-4421
Email: info@koenigcranes.com Internet: www.koenigcranes.com

K 24 S Technical Data

Ausladung und Tragfähigkeit

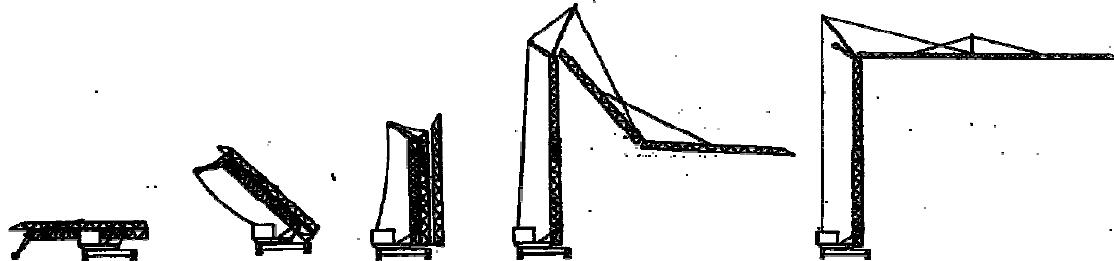
Radius and capacity *Portée et charge*

| Ausladung | | m x kg | | | | | | | | | | | | | | |
|-----------|----|--------|------|------|------|------|------|------|------|------|------|------|------|------|------|------|
| | | 32 | 36 | 39 | 42 | 45 | 49 | 52 | 55 | 59 | 62 | 65 | 68 | 72 | 75 | 78 |
| Ft | 0° | | | | | | | | | | | | | | | |
| Lbs | | 4409 | 4089 | 3769 | 3450 | 3130 | 3020 | 2910 | 2777 | 2645 | 2557 | 2469 | 2425 | 2380 | 2292 | 2205 |

Heben 147' 7"/min - 2205 Lbs (11 kW)
Heben 73' 9"/min - 4409 Lbs (9 kW)
Katzfahren 19' 8"/min - 4409 Lbs (3.5 kW)
Drehen 131' 2"/min (0.9 kW)
 0-1 U/min (2.2 kW)

Operation Voltage: 380V Power Requirement: 14.1 kW Cross Section of Cable: 164'
 Frequency: 63 Amp.

Montage Mounting Montage



Straßentransport

Transport by road *Transport sur la route*

